

Cupped Magnet Sets

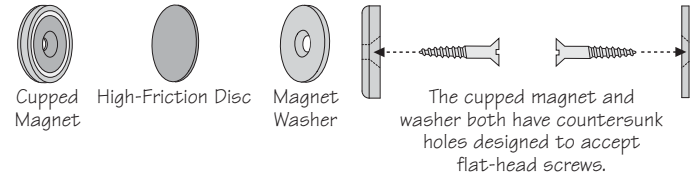
! WARNING: CHOKING HAZARD.

Contains small parts. Not for children under 8 years.

Swallowing any magnet can be dangerous. Seek immediate medical attention if a magnet is swallowed or inhaled. Keep all magnet parts away from children, especially those under the age of 8.

! Caution: Strong magnetic field. Keep magnets away from all electronic equipment or other items that have information stored magnetically. Magnets can corrupt stored data if placed too near.

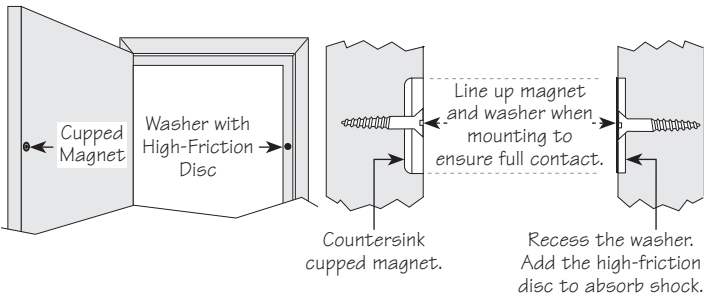
These cupped magnet sets have many uses. They come as a versatile set of a cupped magnet, a same-sized washer for use wherever one is needed (e.g., as a door strike) and a high-friction disc.



A few uses are:

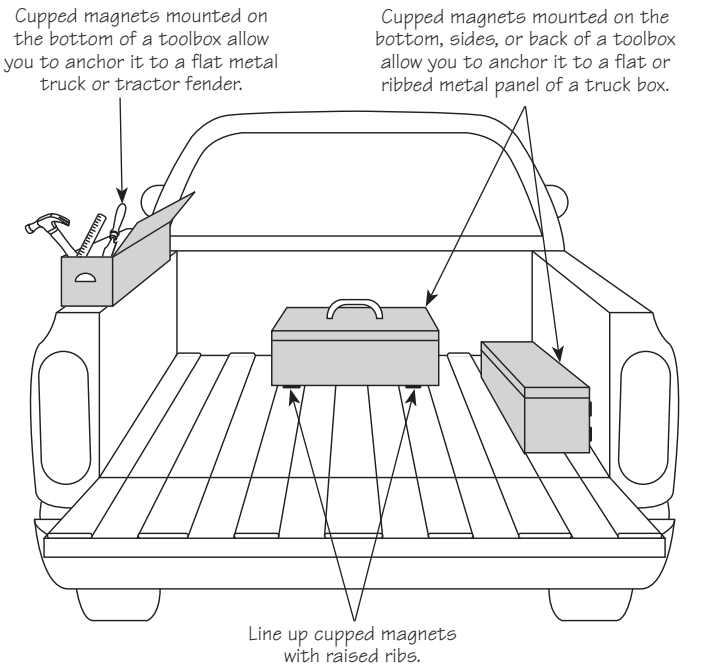
For Doors

You can countersink the magnet in the doorframe and the washer on the door (or vice versa) to use these as door latches. Although a high-friction disc is primarily used to prevent slipping, in this case it is useful as a shock absorber/silencer and can be attached to either the magnet or the washer.



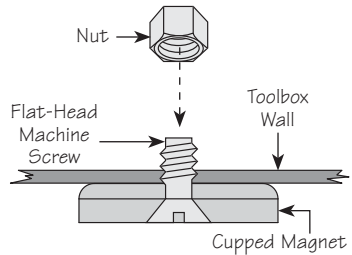
For Mounting Toolboxes on Mobile Equipment

A set of four cupped magnets on the base of a toolbox allows you to anchor the box in a pickup truck, on a tractor fender, or on any piece of equipment with a flat metal panel.



Mounting Cupped Magnets to a Metal Toolbox

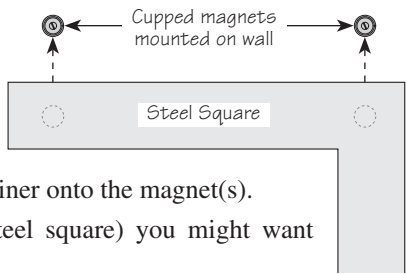
For use with a metal toolbox, fasten the magnets to the box with flat-head machine screws with the nuts inside the box.



For General Wall Mounting

If you want to mount a metal container on a wall, you can put one or more cupped magnets on the wall and just snap the container onto the magnet(s).

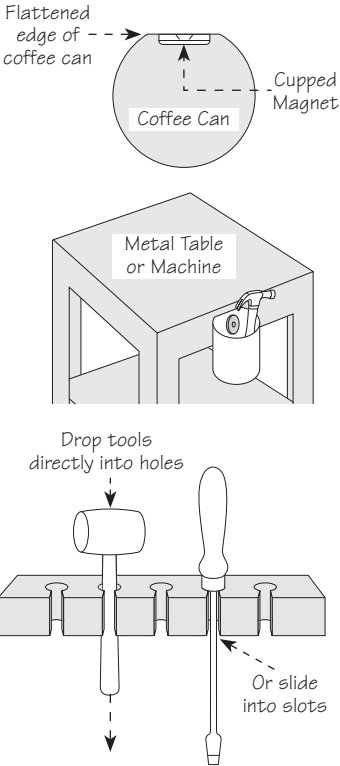
For larger items (e.g., a steel square) you might want to use two magnets.



For Shop Machine Mounting

It is often useful to keep tools in a container attached to a machine where they are needed. One simple answer is to put a cupped magnet inside a coffee can and attach it to the machine body in a convenient spot. For best grip, the can surface should be flattened a bit on the side where you intend to put the magnet.

It is easy to make a custom rack from wood and attach it to the machine with one or two cupped magnets.



From these few examples, you will probably see many other uses.

Note: While use of the high-friction disc is needed to prevent slipping in many situations, you should consider that it slightly reduces the attractive force of the magnetic field between the magnet and the washer (or any steel object being held).